

FISHWAY STATUS REPORT

Date: 2/21/2015
 Inspection Period: 2/15 thru 2/21/2015

All JD Fishways are inspected once per day during winter season, Dec. 1 - Feb. 28
 Frequent monitoring of the PLC displays in SMF Fisheries Office as necessary.



**US Army Corps
of Engineers**
Portland District

JOHN DAY DAM
 JD/WC Project-Fisheries
 P.O. Box 823
 Rufus, Oregon 97050
 Phone: 541-506-7860

John Day Dam	Inspections	Criteria	Total Number of Inspections: 6	Temperature: 42 F
	Out of Criteria	Limit		Secchi: 6.0 Ft.
NORTH FISHWAY			RTS with 5 AWS pumps available on 12/23; up to 4 pumps in service this time of year.	
Exit differential	0	≤ 0.5'		
Exit Control weirs	0	High setting	High setting is normal for JDN	
Count station differential	0	≤ 0.3'		
Weir crest depth (DS gauge)	0	1.0' ± 0.1'		
Entrance differential	0	1.0' - 2.0'	AVG 1.5	
SOUTH FISHWAY			Dewatered / OOS since 1/12/15. RTS is 2/26/15.	
Exit differential	N/A	≤ 0.5'		
Exit Control weirs	N/A	High setting		
Count station differential	N/A	≤ 0.3'		
Weir crest depth (US gauge)	N/A	1.0' ± 0.1'		
South entrance differential	N/A	1.0' - 2.0'	AVG #DIV/0!	
Entrance weir SE1	N/A	depth (≥ 8')	AVG #DIV/0!	
Collection channel velocity	N/A	1.5 - 4 fps	AVG 3.19	
N. Entrance PH(Bay 19)differential	N/A	1.0' - 2.0'	AVG #DIV/0!	
Entrance weir NE1	N/A	depth (≥ 8')	AVG #DIV/0!	
Entrance weir NE2	N/A	depth (≥ 8')	AVG #DIV/0!	
JUVENILE PASSAGE			JBS OOS since 12/18/14. RTS is in late March 2015.	
Forebay/bypass conduit differential	N/A	4.0' - 5.0'	AVG 4.6	
Submersible traveling screens	N/A	visual inspect	STSs installation is scheduled for week of 3/23/15.	
Turbine trashrack drawdown	N/A	<1.5', wkly		
Vert barrier screen drawdown	N/A	<1.5', wkly		
Spill volume	OOS		On seal since 11/30	
Spill pattern	N/A	per FPP		
Turbine Unit Priority	N/A	per FPP		
Turbine 1% Efficiency	N/A	per FPP		

SMOLT MONITORING FACILITY

Operations: SMF will be OOS/ undergoing maintenance until late March'15.

Debris: N/A

Maintenance: SMF winterized by 11/26. Annual PMs underway. One transport flume's joint needs to be sealed; no other major issues this year.

Research:

None

Fallbacks: AVG: #DIV/0! MAX: #DIV/0! MIN: #DIV/0!

OTHER ISSUES:**JOHN DAY**

BIRDS : see the Avian Numbers tab. We report all species and locations, but in reality only gulls in the tailrace BRZ are relevant at JD.

Avian line # 26 was found failed/its end in the water on 9/1. This is shore- to-shore line and immediately adjacent to the previously missing # 27.

JD Engineering preparing SOW for the re-installation contract, which is expected in March '15; funding by special CRFM \$.

Operations:

JBS OOS since 12/10/14. RTS is in mid March '15.

JD North Fishway has been in service since 12/23; 5 out of 6 AWS pumps are available. Repair work on pump 4 continues; pump 3 has vibration issues and should be the last in service.

JD South Fishway OOS for annual maintenance since 1/10/15. RTS is by 2/26/15.

Maintenance:

JD North AWS pumps - five out of total six are available. Repairs of AWS pump # 4 by a contractor started on 1/26. RTS is by April '15 :)

Calibration: 1/10/2014 All sensors were within the criteria of 0.3' .

JD South Fishway's annual inspections & maintenance underway since 1/12/15. New, spare SE-1 entrance weir was installed on 2/13/15.

JD Structural continues repairing the leaking expansion joints. Engineering investigates the wall erosion at 90 degree bend, south PH Collection Channel to be fixed the following year; the temporary containment plate is estimated to last through the end of 2015 season.

Research:

2014 Adult Fish Counting by Normandeau Associates completed on October 31. No fish counting at JD to occur until 1 April, 2015.

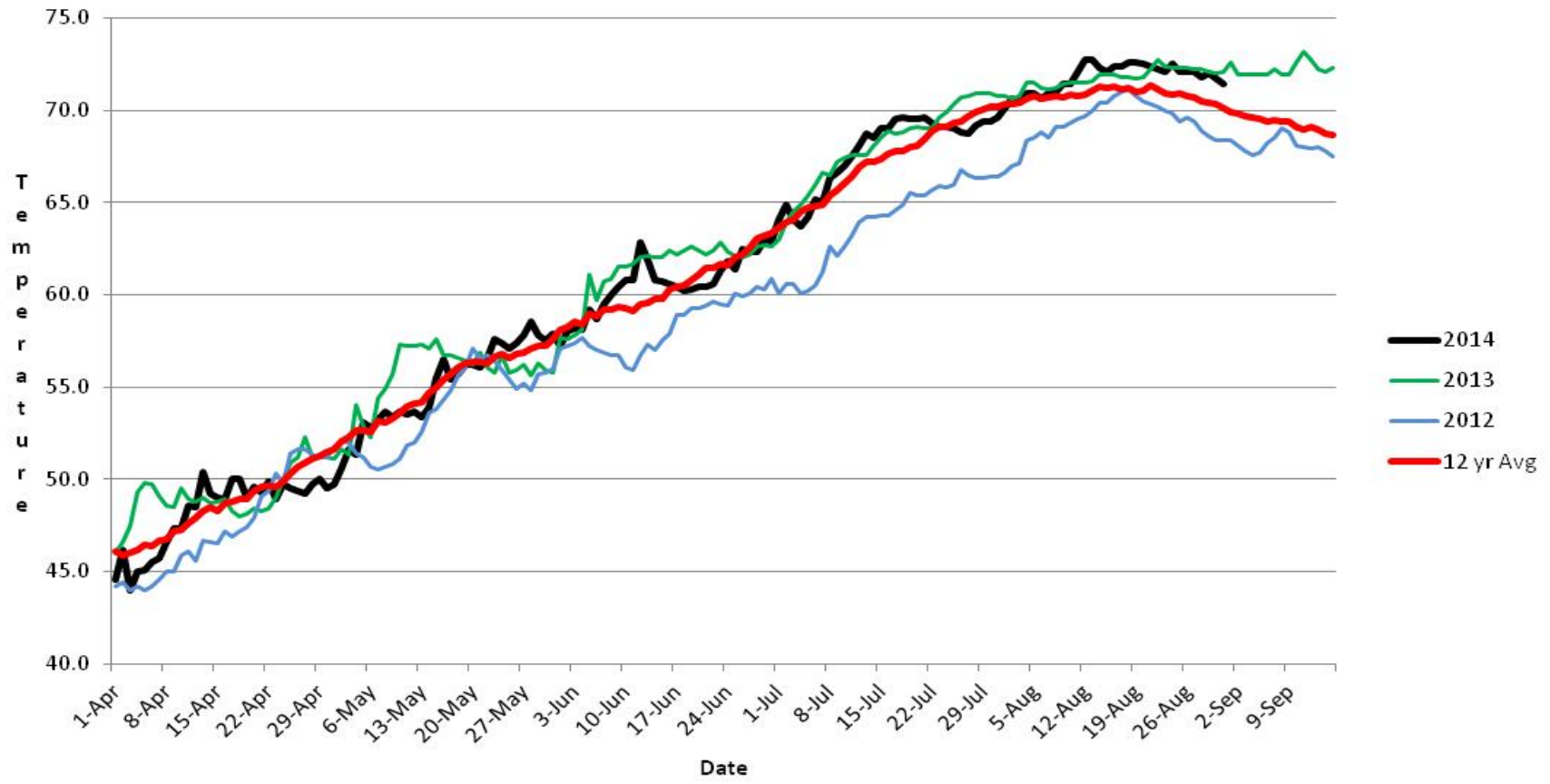
Adult Salmonids Radio telemetry evaluations are ongoing at both JD adult fishway. University of Idaho crew is in charge of detecting of all adult salmonids, which were tagged and released at Bonneville Dam.

Kevin Moynahan

Date: ___ 22-Feb-15

OPM John Day/Willow Creek Project

JDA SMF Water Temp



JDA COLLECTION CHANNEL VELOCITY

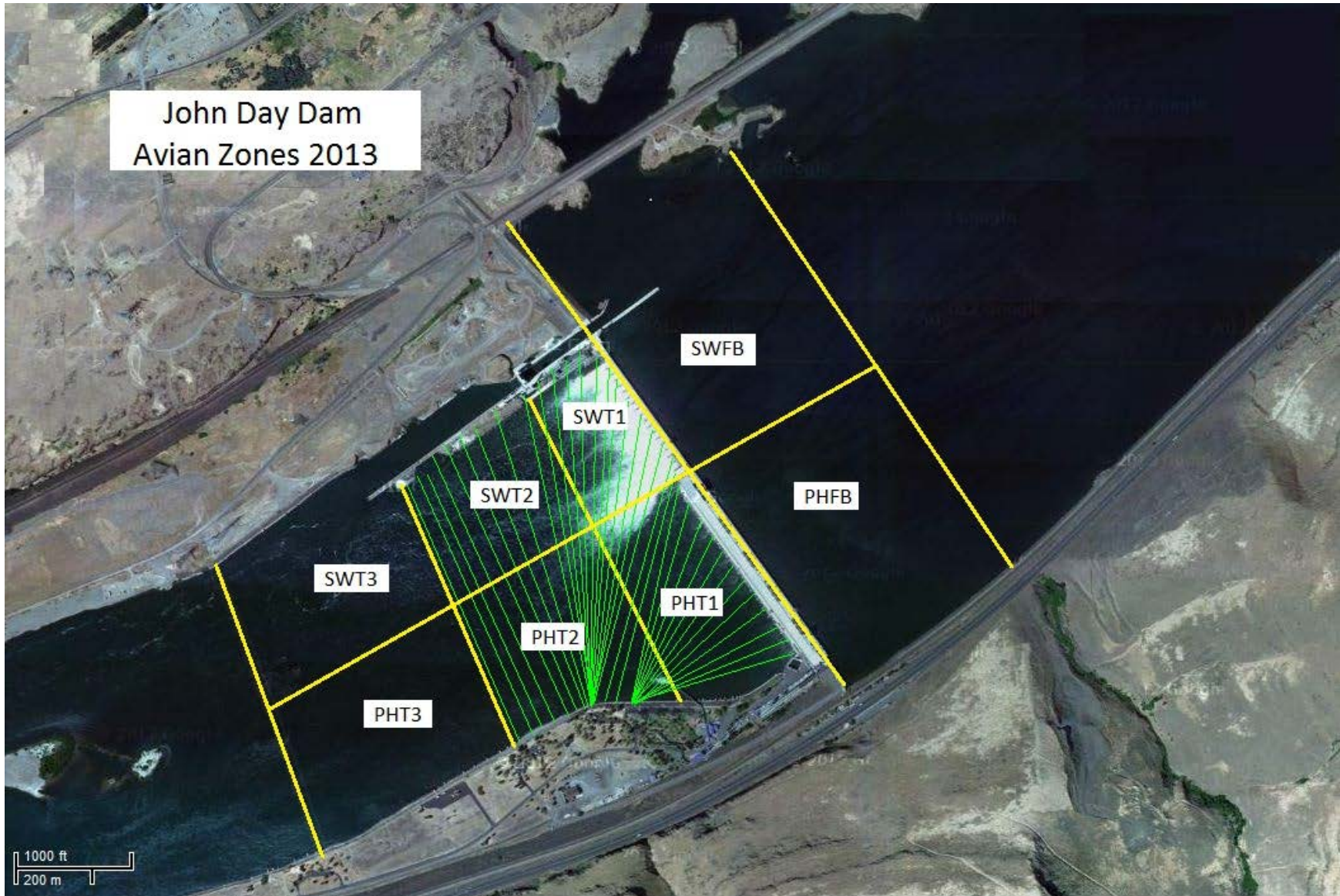
Date 22-Dec-14

By: pk

Bay(s)	Time	Sec.	Velocity (f/s)
0-2	01:05.0	65	2.77
2 - 4	0:02:02	122	3.16
4 - 6	0:03:00	180	3.10
6 - 8	0:04:01	241	2.95
8 - 10	0:04:59	299	3.10
10 - 12	0:05:54	354	3.27
12 - 14	0:06:57	417	2.86
14 - 16	0:07:58	478	2.95
16 - 18	0:08:38	518	4.50

3.19

John Day Dam
Avian Zones 2013



John Day:

	Temp:	Secchi:	Fallbacks
Sun	41	6.0	
Mon	41	6.0	
Tues	41	6.0	
Wed			
Thur	42	6.0	
Fri	42	6.0	
Sat	42	6.0	
AVG:	42	AVG: 6.0	AVG #DIV/0!
			MAX #DIV/0!
			MIN #DIV/0!

	NE1	NE2	S.Ent	SE1	N.Ent	JBS Diff	Bay19
Sun	oos	oos	oos	oos	1.6	oos	oos
Sun							
Mon	oos	oos	oos	oos	1.5	oos	oos
Mon							
Tues	oos	oos	oos	oos	1.5	oos	oos
Tues							
Wed	oos	oos	oos	oos		oos	oos
Wed							
Thur	oos	oos	oos	oos	1.5	oos	oos
Thur							
Fri	oos	oos	oos	oos	1.4	oos	oos
Fri							
Sat	oos	oos	oos	oos	1.4	oos	oos
Sat							
AVG:	#DIV/0!	#DIV/0!	#DIV/0!	#DIV/0!	1.5	#DIV/0!	#DIV/0!